

Basket filter DELTA-OW

for hydrous, viscous and super-viscous media

The basket filter from DELTAFILTER is a logic, cost-efficient and environmental-protecting way of filtration.

- Compact and space-saving filter housing with integrated switching
- In- and outlet at the same height (in-line)
- Quick release fastener to open the filter cover easily (single-hand control)
- Quick and easy mounting and demounting of stainless steel baskets
- Continuous flow rate through switch
- Low pressure drop
- Nominal diameter connection from DN20 to DN200
- Filter meshes from 50 µm up to 6350 µm
- Special baskets with meshes from 10 µm to 25 µm as pleated versions available
- classification acc. to article 4, paragraph 3, SEP



OPTIONS

Differential pressure indicators with and without electrical contact for remote transmission, magnetic columns, pleated baskets, high-pressure version etc.

DESCRIPTION

The double basket filters of the DELTA-OW series offer a cost-efficient method to clean liquids or to regain valuable solid state bodies as well as the protection of piping, controls and instruments. The compact filter is a cast design and is supplied with high quality stainless steel baskets. The low-maintenance, metal-to-metal switch valve is integrated into the one-piece cast housing. You can switch between the two filter chambers by turning the hand lever. As a result, the medium is passed from one basket to the other without interruption.

TECHNICAL DATA

	OW/O	OW/WB	OW/S ¹	OW/S/WB ¹	OW/SS ¹	OW/C
material housing	cast iron EN 1561 EN-JL 1030		cast steel EN 10213 1.0625		stainless steel casting EN 10213 1.4408	cast iron EN 1561 EN-JL 1030
material basket	stainless steel 1.4571/1.4401					
max. working pressure at 50°C ²	17 bar (thread) 16 bar (flange)		22 bar (thread) 16 bar (flange)		22 bar (thread) 14,3 bar (flange)	17 bar (thread) 16 bar (flange)
drain plug	brass		stainless steel	brass	stainless steel	
gaskets ²	FPM					
sleeve	-	bronze BS1400 LG2C	-	bronze BS1400 LG2C	-	-
change over cocks	spheroidal graphite EN 1563 EN-JS 1030	bronze BS1400 LG4C	spheroidal graphite EN 1563 EN-JS 1030	bronze BS1400 LG4C	stainless steel EN 10213 1.4408	
internal parts	steel EN 10087 1.0715	stainless steel EN 10088 1.4305	steel EN 10087 1.0715	stainless steel EN 10088 1.4305		
painting	red	blue	silver		-	blue

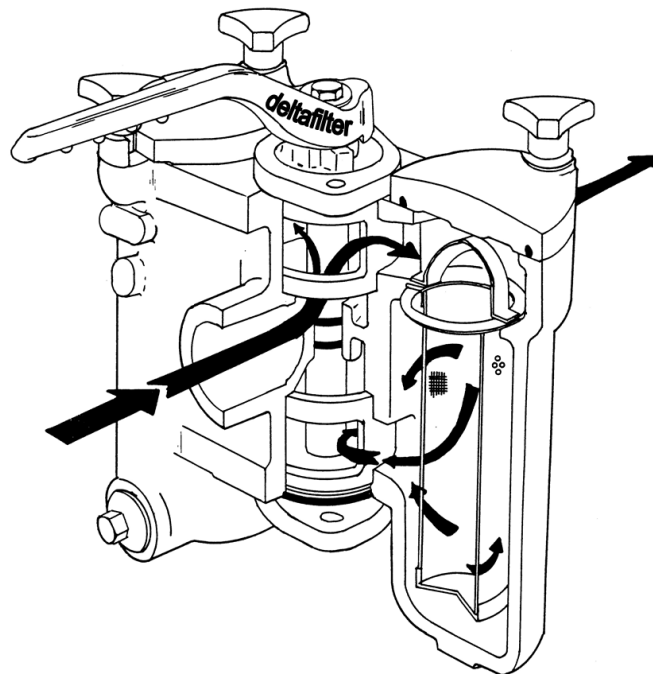
¹ Optional in high-pressure version A300

² Optional other materials, designs, temperatures etc.

³ dimensions for cast iron / cast steel and stainless steel casting

STANDARD BASKET DATA

Perforated plate Holes per inch ²	Fineness in micrometers	Free area in percent
11	6350	54
33	3170	39
124	1600	38
Fineness in MESH		
20	910	53
30	560	42
40	380	40
60	250	35
80	190	34
120	130	32
200	80	36
300	50	32

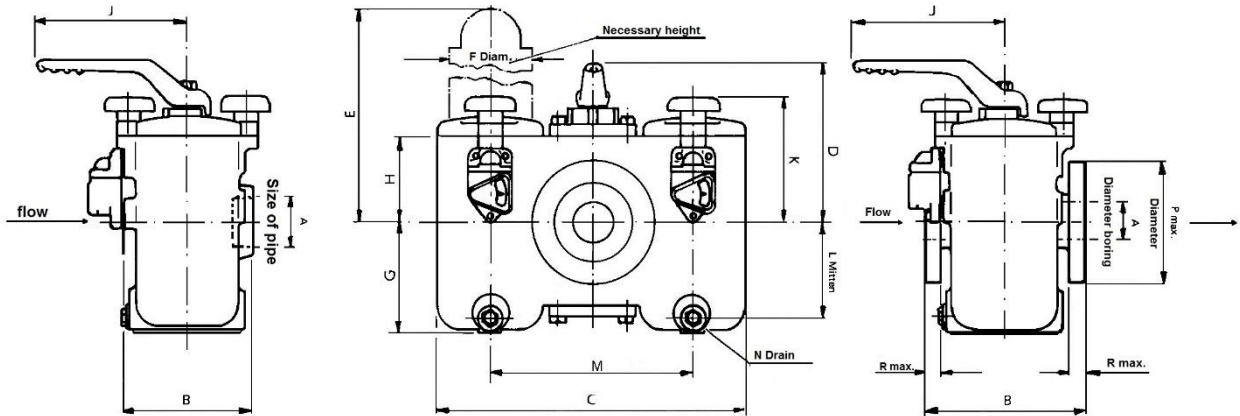


Certified acc. to
ISO 9001:2015

Phone +49 / 62 32 / 31 51 31
Fax +49 / 62 32 / 31 51 35

Email info@deltafilter.com
Web www.deltafilter.com

DIMENSIONS AND WEIGHTS



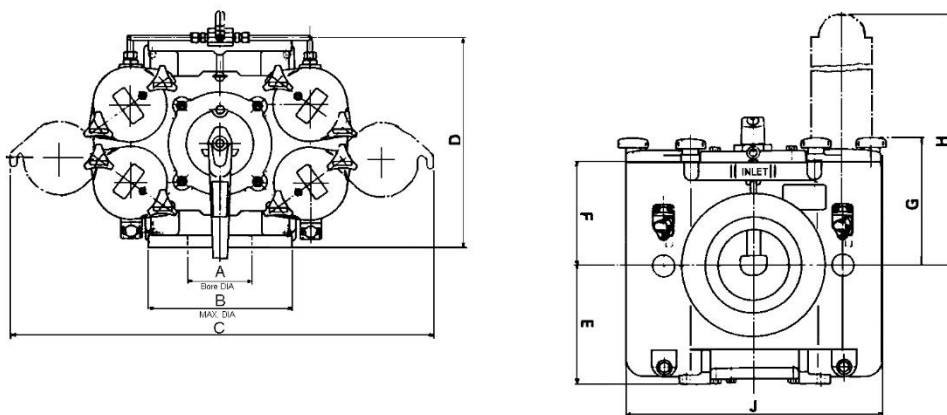
SCREW THREAD ACC. TO BSP ²

A in mm	B in mm	C in mm	D in mm	E in mm	F in mm	G in mm	H in mm	J in mm	K in mm	L in mm	M in mm	N	Filter area per basket in cm ²	Weight in kg
20 - 3/4" BSP	120	282	149	220	73	105	64	205	103	86	170	1/2" BSP	184	13
25 - 1" BSP	120	282	149	220	73	105	64	205	103	86	170	1/2" BSP	184	13
32 - 1 1/4" BSP	137	295	175	306	73	145	90	205	132	122	184	1/2" BSP	268	19
40 - 1 1/2" BSP	137	295	175	306	73	145	90	205	132	122	184	1/2" BSP	268	19
50 - 2" BSP	184	425	216	351	112	156	112	219	165	131	280	1/2" BSP	484	49
65 - 2 1/2" BSP	184	425	216	351	112	156	112	219	165	131	280	1/2" BSP	484	49

FLANGES DRILLED ACC. TO EN1092-1 ²

A in mm	B in mm	C in mm	D in mm	E in mm	F in mm	G in mm	H in mm	J in mm	K in mm	L in mm	M in mm	N	P ³ in mm	R ³ in mm	Filter area per basket in cm ²	Weight in kg
25 - 1"	152	282	149	220	73	105	64	205	103	86	170	1/2" BSP	124	16	184	16
40 - 1 1/2"	175	295	175	306	73	145	90	205	132	122	184	1/2" BSP	156	18	268	23
50 - 2"	210	425	212	351	112	156	112	219	165	131	280	1/2" BSP	165	20	484	52
65 - 2 1/2"	230	425	212	351	112	156	112	219	163	131	280	1/2" BSP	191	20	484	53
80 - 3"	267	490	256	451	132	210	140	250	198	186	330	1/2" BSP	210	22/24	718	85
100 - 4"	318	540	294	575	132	265	175	250	233	241	380	1/2" BSP	230/254	24	964	125
200 - 8"	570	1020	550	1210	248	520	390	500	436	472	700	1/2" BSP	381	30	3980	730

6" MULTI-BASKETFILTER (2 BASKETS PER FILTER CHAMBER)



A in mm	B in mm	C in mm	D in mm	E in mm	F in mm	G in mm	H in mm	J in mm	Filter area per basket in cm ²	Weight in kg
150 - 6"	320	944	472	268	230	286	575	596	1129	250

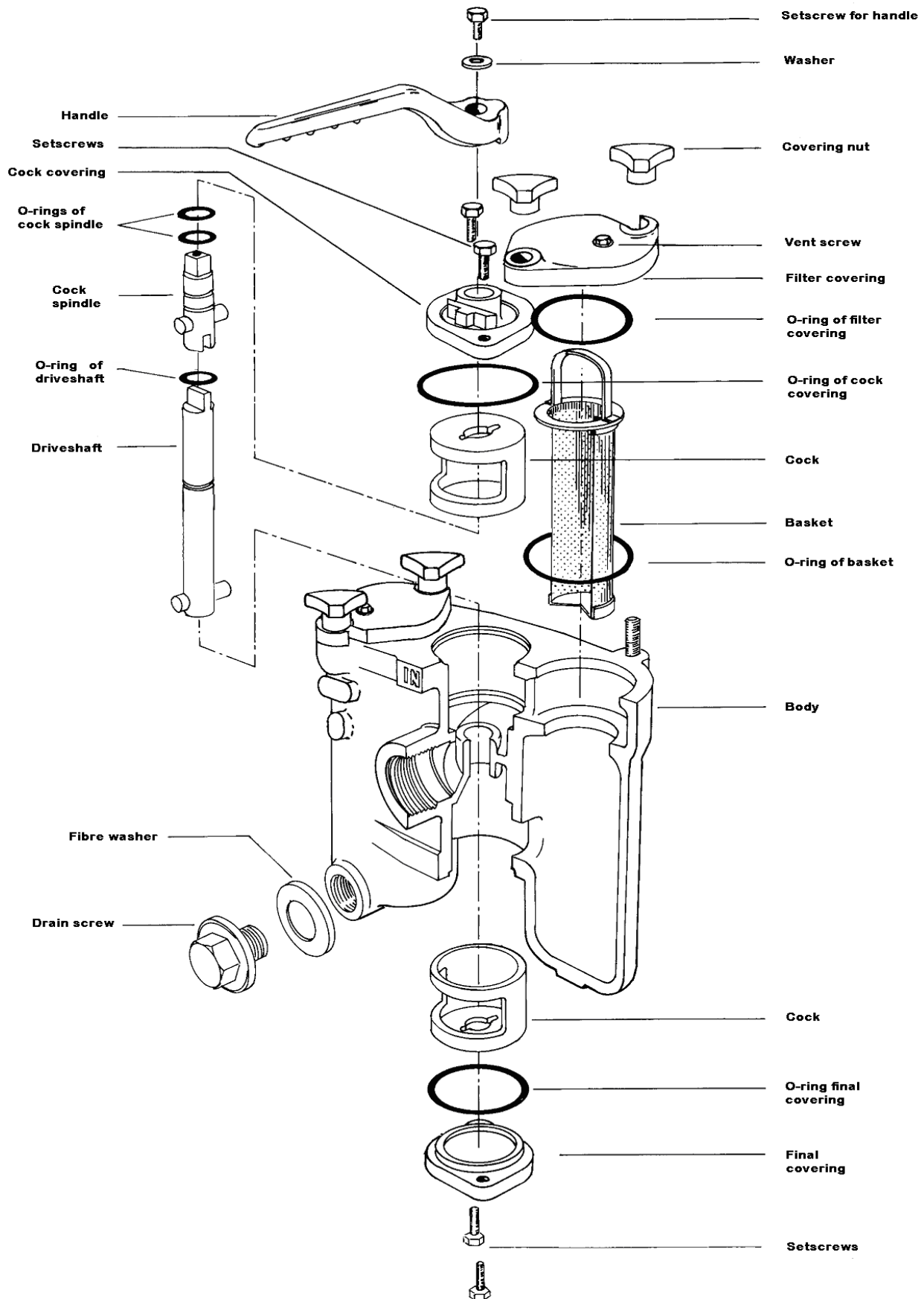


Certified acc. to
ISO 9001:2015

Phone +49 / 62 32 / 31 51 31
Fax +49 / 62 32 / 31 51 35

Email info@deltafilter.com
Web www.deltafilter.com

SPARE PARTS DRAWING



Illustration, weights and measures are only indices.

If desired we will prepare a detailed quotation for you.

5th June 2024 - Technical changes reserved

Brand of Cleanova



Certified acc. to
ISO 9001:2015

Phone +49 / 62 32 / 31 51 31
Fax +49 / 62 32 / 31 51 35

Email info@deltafilter.com
Web www.deltafilter.com