

Automatic Backflush-Filter DELTA-BFF-250 for hydrous media

The automatic backflush-filter from DELTAFILTER is a logic, cost-efficient and environmental-protecting way of filtration.

- No filter cartridge disposal.
- Self-cleaning routine without interrupting operation on reaching the permitted differential pressure through automatic reversal of filter cartridges or manually by hand control with the filtered medium.
- No moving parts within the filter system resulting in low operating costs due to long service life.
- Full cross-section for drainage of flushing medium resulting in short flushing times and less loss of medium.
- Simple and time-saving maintenance. Filter cartridges can be removed without dismantling of the filter housing.
- Universal connections through variable positions for inlet and outlet as well as for dirt drain.
- Filtration ratings from 50 µm nominal up.
- Control and monitoring of individual functions through a PLC (programmable logic controller).
- Individual functions and/or causes of malfunction displayed through indicator light on control cabinet.
- Passive contacts for remote transfer in the event of malfunction.



Backflush-Filter DELTA-BFF-250,
stainless steel 1.4571, 10 bar

OPTIONAL

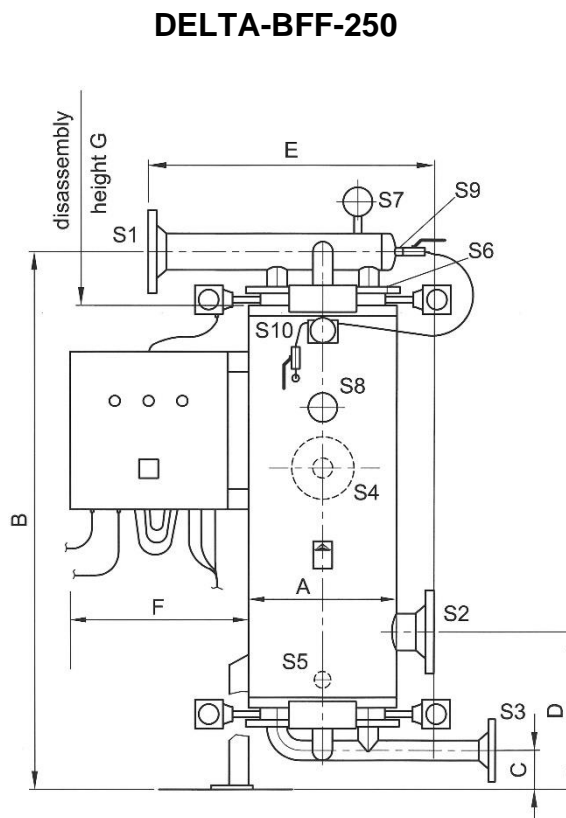
TÜV-acceptance, special materials, backflush by foreign medium possible (e.g. on depressurised drainage of filtered medium), optionally the control can be enhanced and the filter supplied with the required valves.

PRODUCT DESCRIPTION

Three-piece, autonomous filter system with an inlet register removable from the top, cylindrical filter housing and a flushing register removable from the bottom. Several type STBFF backwashable filter cartridges are fitted into the filter housing for the filtration process. Cartridges are backwashed automatically through the overpressure of the filtered medium, without interruption to the filter operation and reversal is triggered by the switching point set on the differential pressure indicator. This filter system is also available with manual valve operation. Dirt is removed from the filter cartridges through the reversal process and quickly discharged through the full cross-section by the flushing register. This key benefit results in short flushing times and low flushing medium consumption. The hydraulic conditions required for this process are created by valves. These valves are hand-operated or controlled by a PLC. In the case of automatic filters, the valves are actuated by pneumatic rotating drives. This filter system is extremely robust and designed for extreme operating conditions. If necessary, filter cartridges can be replaced without special tools and without dismantling of the filter housing. The filter housing is supplied with 4 feet.

TECHNICAL DATA

Design and calculation:	PED 2014/68/EU, AD2000 ¹
Material filter housing:	1.4571 ^{1,2}
Material filter cartridge:	1.4435/1.4571 ¹
Register:	1.4571 ^{1,2}
Valve housing:	GG25, coated with Rilsan ¹
Collar:	EPDM ¹
Washer and shaft:	1.4408/1.4021 ¹
Max. allowable pressure:	10 bar ¹
Max. allowable temperature:	80°C ¹
Gaskets:	O-rings of FPM ¹
Filtration ratings nominal:	50 – 500 µm ³
Electrical connection value:	400 V, 50 Hz, 750 W ¹
Control air:	compressed air 6 – 8 bar ⁴
Protection class control cabinet:	IP54 ¹



- ¹ Optional other materials, pressures, temperatures, designs, coatings, protections, voltages etc.
- ² Surface pickled and passivated
- ³ Filter rates smaller than 50 µm must be tested in a trial
- ⁴ Compressed air clean and dry
- ⁵ Optional DN100, DN125 and DN200

DELTA-BFF-250			
Flow capacity for 50 µm nominal	130 m³/h	Dimension A in mm	Ø508
Flow capacity for 100 µm nominal or larger	250 m³/h	Dimension B in mm	1354
Inlet S1; Outlet S2	Flange DN150 ⁵ , PN16, B1	Dimension C in mm	128
Discharge S3	Flange DN80, PN16, B1	Dimension D in mm	545
Flushing nozzle S4 for foreign fluid optional	Flange DN80, PN16, B1	Dimension E in mm	900
Drain S5	socket 1" BSP with ball valve	Dimension F in mm	ca. 650
Ventilation S6	socket 3/8" BSP with ball valve	Disassembly height G in mm	ca. 870
Manometer S7/S8; Differential pressure S9/S10	socket 1/4" BSP inner thread		
Weight in kg (empty)	ca. 350		

Illustration, weights and measures are only indices.

If desired we will prepare a detailed quotation for you.

21st March 2024 - Technical changes reserved.



Certified acc. to
ISO 9001:2015

Phone +49 / 62 32 / 31 51 31
Fax +49 / 62 32 / 31 51 35

Email info@deltafilter.com
Web www.deltafilter.com